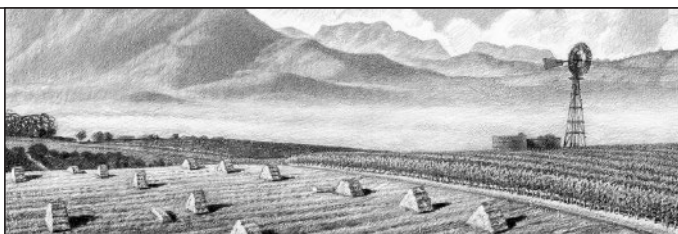


M·A·N Family Wines

Sauvignon Blanc 2014



Warrelwind Sauvignon Blanc

Our Sauvignon Blanc is produced from higher, cooler vineyards in the Cape. Warrelwind (whirlwinds) are common in the vineyards throughout summer. The seasonal winds cool the grapes and turn the windmills dotting the landscape.

Wine description & food pairing

Our Warrelwind Sauvignon Blanc is a palate pleasing wine: a harmonious and well-balanced wine showing typical green herbaceous flavours as well as richer tropical notes. Pale straw in colour with a light green tinge, it has a lively bouquet of tropical fruit with herbaceous, green apple and green pepper notes. On the palate, bright tropical fruit flavours of passion fruit and pineapple are complemented by crisp, well integrated acidity. The wine has a rich, full structure with a rounded and creamy mouthfeel. It should pair well with oysters, sushi, salads, lemon-garnished fish dishes and Thai food. Serve chilled.

Vineyards

A blend of grapes from warmer Agter-Paarl vineyards for riper, tropical notes (70%), and cooler, higher-elevation vineyards in Stellenbosch, Elgin and Franschhoek for the greener, herbaceous characters (30%).

Winemaking techniques

Harvesting takes place over 3 weeks at different ripeness levels to capture a wider range of flavours. Reductive winemaking (minimal air/oxygen contact) preserves freshness and fruitiness, while 3 months maturation with lees contact and stirring provides additional complexity and integration. Semillon (13%) from Agter-Paarl is added for additional palate weight and complexity. The wine was fined and filtered before bottling.

Vintage conditions

Favourable winter conditions in 2013 set the stage for a promising 2014 growing season. Early summer rains were welcomed and provided sufficient moisture in the soil to nurture the wines throughout the warmer stages of harvest. The white grapes were in good condition, full of complex flavours. The red grapes showed excellent colour, complexity and grip. Overall the quality of both white and red grapes was up to standard and the 2014 harvest concluded with conditions that were consistent with previous good vintages.

Technical details:

Blend: Sauvignon Blanc 87%, Semillon 13% • **Grape source:** Cool climate vineyards of the Western Cape (Agter-Paarl 70%, Stellenbosch 8%, Franschhoek 14%, Elgin 8%) • **Closure:** Screwcap
Barcode: EAN 6009669350437 • **USA** 0-89419-16403-9 • **Alc:** 13.00% • **RS:** 5.5 • **TA:** 5.9 • **pH:** 3.30