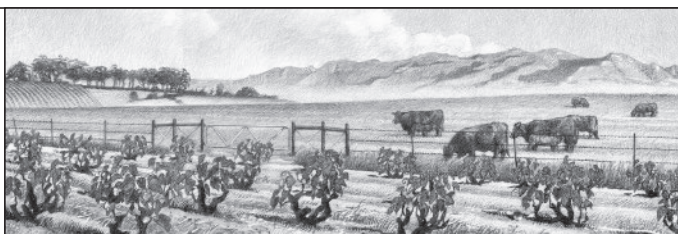


# M·A·N Family Wines

## Pinotage 2013



### Bosstok Pinotage

Bosstok refers to the untrellised bush-vine vineyards that make up more than half of the vineyards of our region. The bosstok Pinotage vineyards grow close to the ground, producing lower yields of concentrated, flavourful grapes.

### Wine description & food pairing

A modern style emphasising the softer Pinot Noir-like side of Pinotage.

The wine is ruby-garnet red with a hint of purple. Our Pinotage shows pleasing aromas of mocha chocolate and roasted coffee beans, followed by juicy flavours of red-berries, nutmeg and vanilla spice on the palate.

The sweet fruit flavours of this medium-bodied Pinotage make it an ideal match for spicy food, pizza, smoked pork and flavourful venison dishes, or delicious just by itself. Serve at a cool room temperature.

### Vineyards

Sourced from our Agter-Paarl vineyards, we select younger bush-vine vineyards to ensure retention of the characteristic pure fruit flavours and softer tannins. The Malmesbury Shale soils and unirrigated vineyards combine to give wines with concentrated, juicy fruit flavours, minerality and elegance.

### Winemaking techniques

Fermented in stainless steel tanks over 5 days with frequent pump-overs. At around 8 degrees balling, the skins were removed and the wine was pressed and racked back to tank for completion of alcoholic and malolactic fermentation. 25% of the wine was matured in American oak barrels (20% new) for 12 months. We blended in 14% Shiraz for additional fruitiness and complexity. Fined and filtered before bottling.

### Vintage conditions

A cold winter in 2012 set the stage for a very good 2013 harvest. Yields were in line with long-term averages. The growing season was relatively dry and long, with slightly cooler than normal temperatures throughout, and no heat-waves. Harvest was 2 weeks later than normal, resulting in white wines with intense tropical fruit flavours and good varietal characteristics. The red wines have very good colour and soft, ripe tannins.

### Technical details:

**Blend:** Pinotage 86% Shiraz 14% • **Grape source:** Coastal Region  
**Closure:** Screwcap • **Barcode:** EAN 6009669350406 • **USA** 0-89419-16303-2  
**Alc:** 14.00% • **RS:** 3.6 • **TA:** 5.4 • **pH:** 3.58