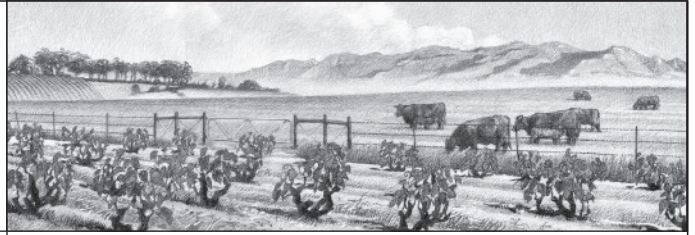


# M·A·N Family Wines

## Pinotage 2012



### Wine description & food pairing

A modern style emphasising the softer Pinot Noir-like side of Pinotage.

The wine is ruby-garnet red with a hint of purple. Our Pinotage shows pleasing aromas of mocha chocolate and roasted coffee beans, followed by juicy flavours of red-berries, nutmeg and vanilla spice on the palate.

The sweet fruit flavours of this medium-bodied Pinotage make it an ideal match for spicy food, pizza, smoked pork and flavourful venison dishes, or delicious just by itself. Serve at a cool room temperature.

### Vineyards

Sourced from our Agter-Paarl vineyards, we select younger bush-vine vineyards to ensure retention of the characteristic pure fruit flavours and softer tannins. The Malmesbury Shale soils and unirrigated vineyards combine to give wines with concentrated, juicy fruit flavours, minerality and elegance.

### Winemaking techniques

Fermented in stainless steel tanks over 5 days with frequent pump-overs. At around 8 degrees balling, the skins were removed and the wine was pressed and racked back to tank for completion of alcoholic and malolactic fermentation. 25% of the wine was matured in American oak barrels (20% new) for 15 months. Fined and filtered before bottling.

### Vintage conditions

The 2012 vintage was a good vintage for both red and white wines in the Agter-Paarl region. Temperatures were warmer earlier in the season, but cooled off towards the end allowing for slower and more balanced ripening, and resulting in moderate alcohol levels as well as good colour and concentration. Cool morning and afternoon breezes throughout summer helped to keep the ripening process smooth and steady.

### Bosstok Pinotage

Bosstok refers to the untrellised bush-vine vineyards that make up more than half of the vineyards of our region. The bosstok Pinotage vineyards grow close to the ground, producing lower yields of concentrated, flavourful grapes.

### Technical details:

**Blend:** Pinotage 100% • **Grape source:** Coastal Region

**Closure:** Screwcap • **Barcode:** EAN 6009669350406 • **USA** 0-89419-16303-2

**Alc:** 14.00% • **RS:** 4.1 • **TA:** 5.9 • **pH:** 3.51